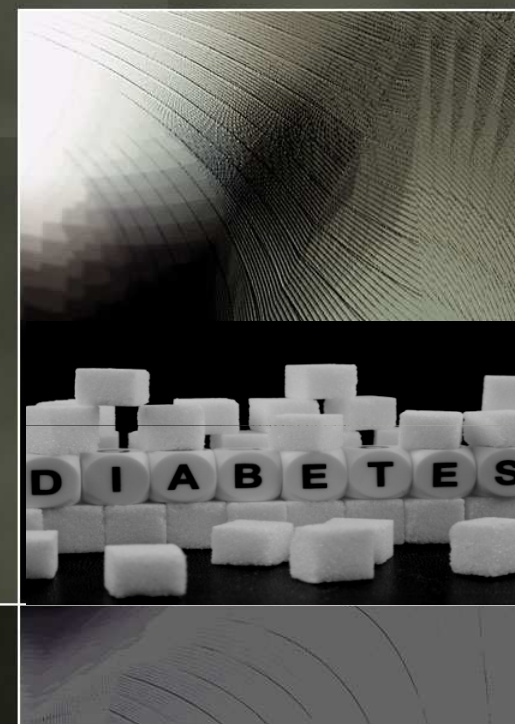


The association of diabetic retinopathy and diabetic nephropathy among type 2 diabetic patients in Thailand



Miss Kamolwan Sriplang

Dr.PH 5671100031

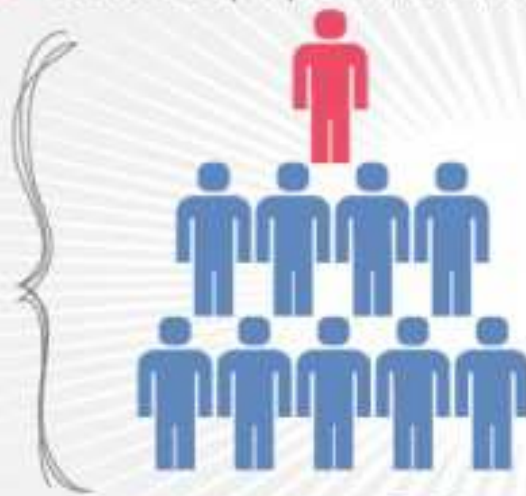
Content

- o INTRODUCTION
- o OBJECTIVE
- o METHODS
- o RESULTS
- o DISCUSSION
- o CONCLUSION

It's W**O**ld Diabetes Day on
November 14th. How much do you
know about this chronic disease?



347 million people in the world have diabetes.



90% of them have type 2 diabetes
which is usually preventable



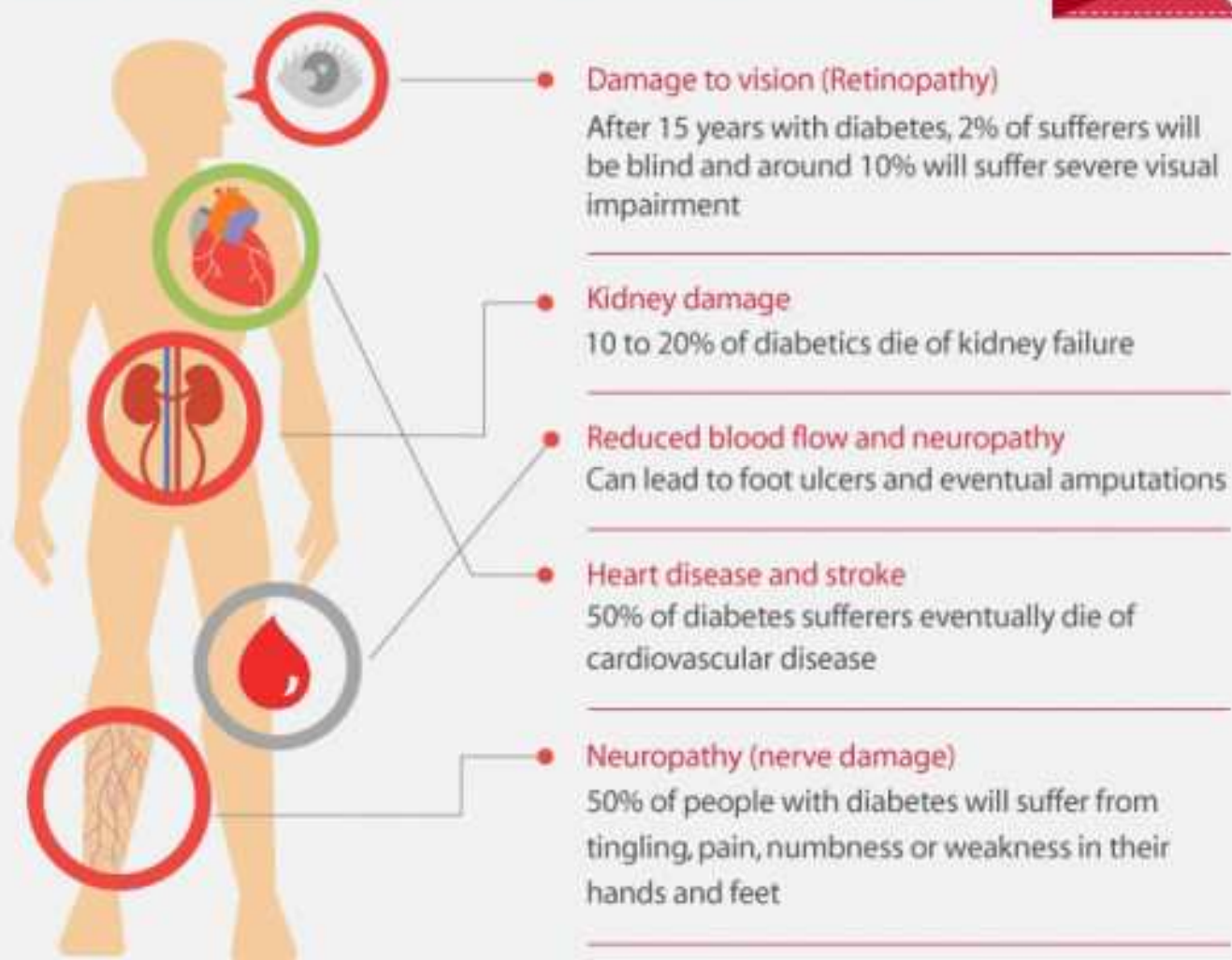
Diabetes is currently responsible for **3%** of all deaths in the world

The World Health Organisation predicts deaths from

Diabetes will increase by two thirds by **2030**

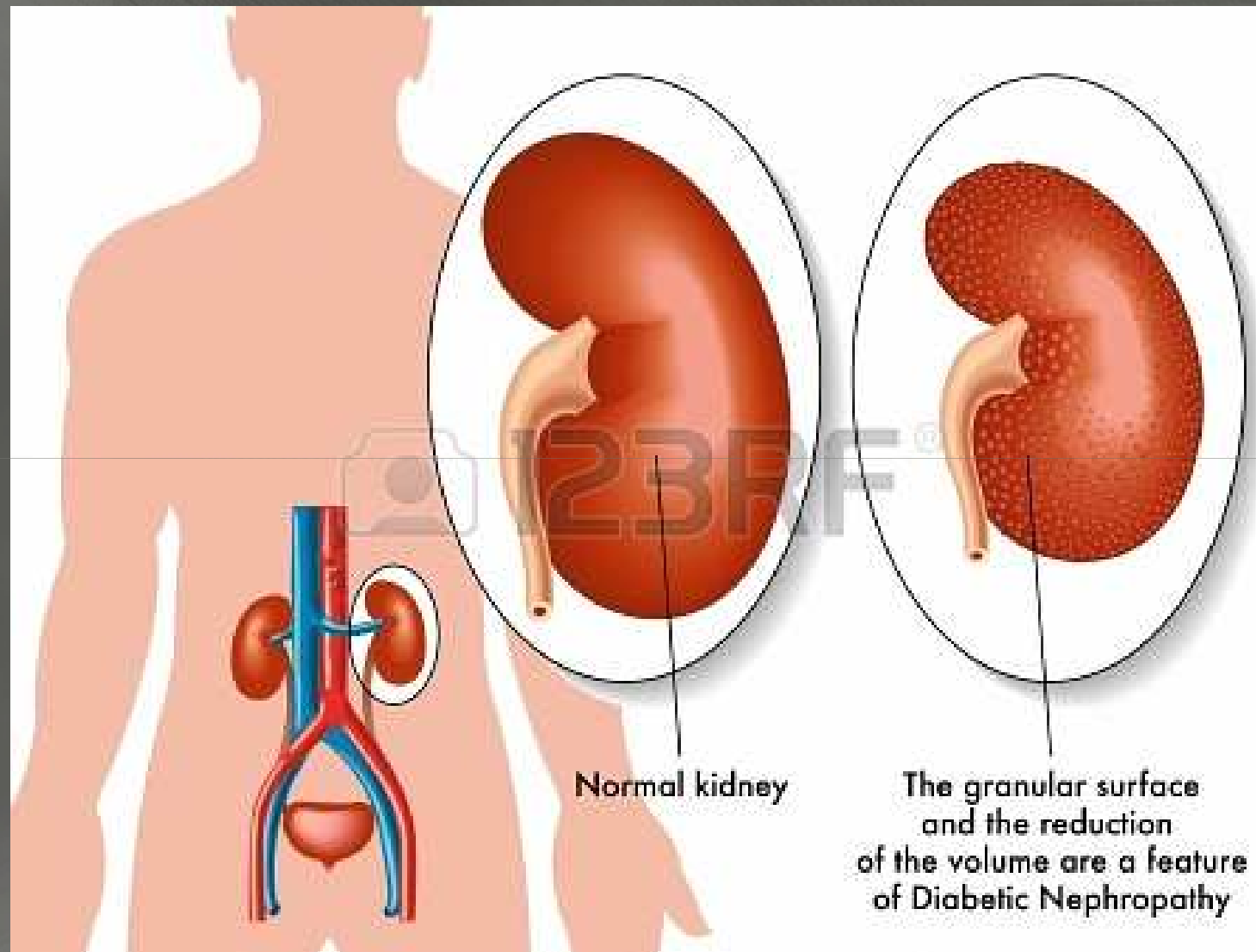


Diabetes contributes to many health complications, some of which can be very severe. Common complications include:

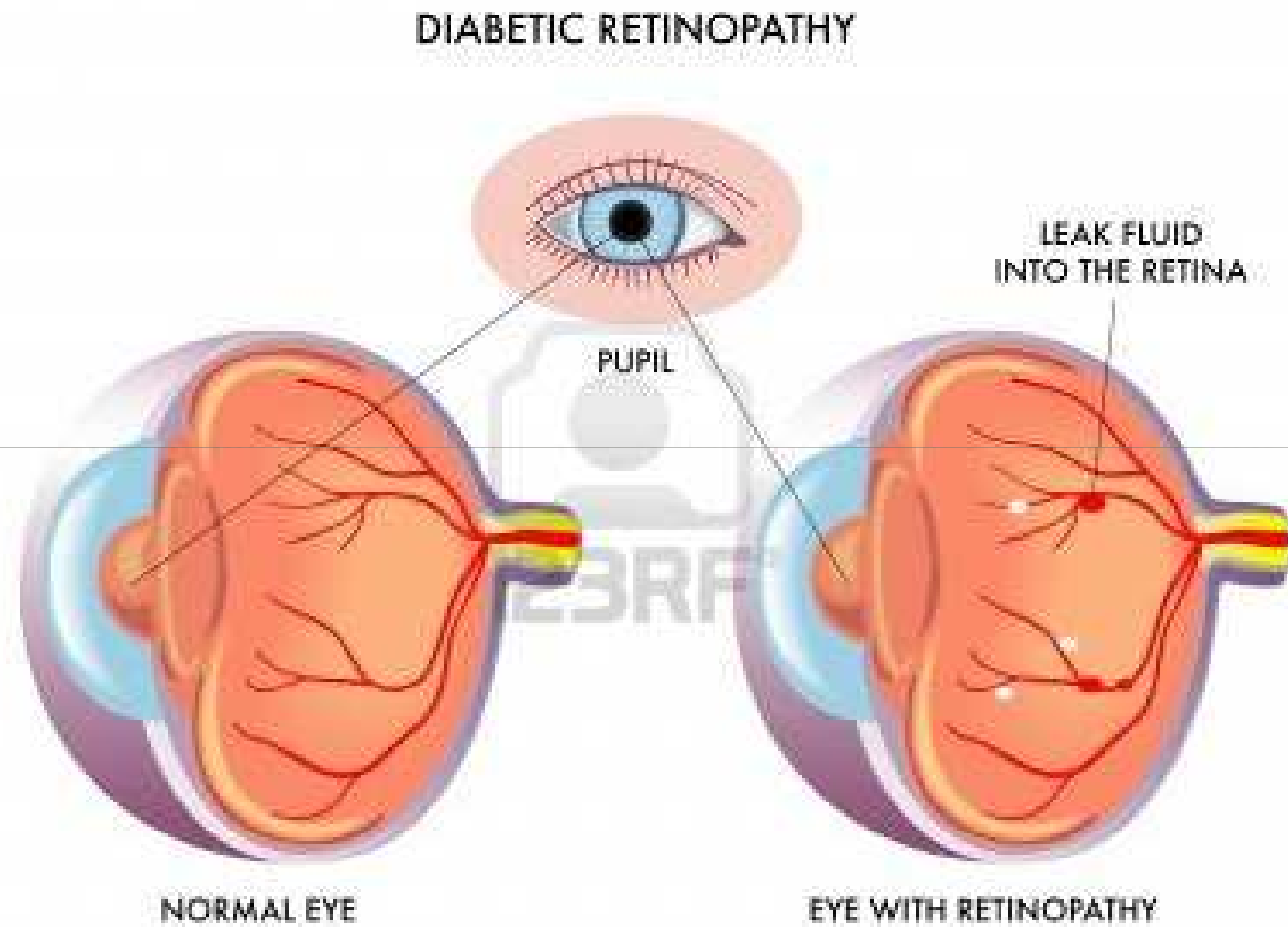


A person with diabetes is at least **twice as likely to die** at any given time than their peers without diabetes

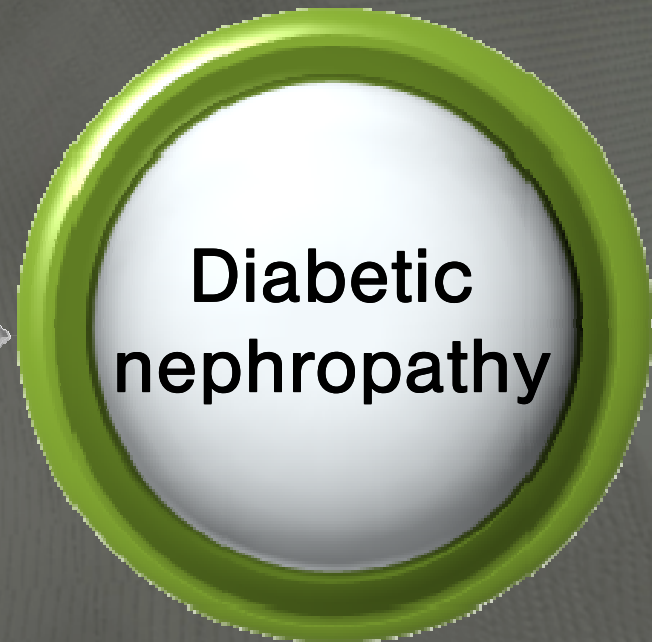
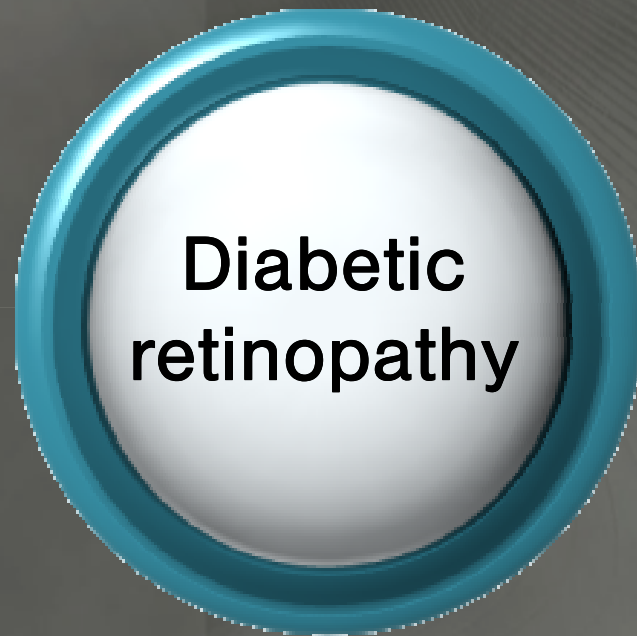
Diabetic nephropathy



Diabetic retinopathy



Objective



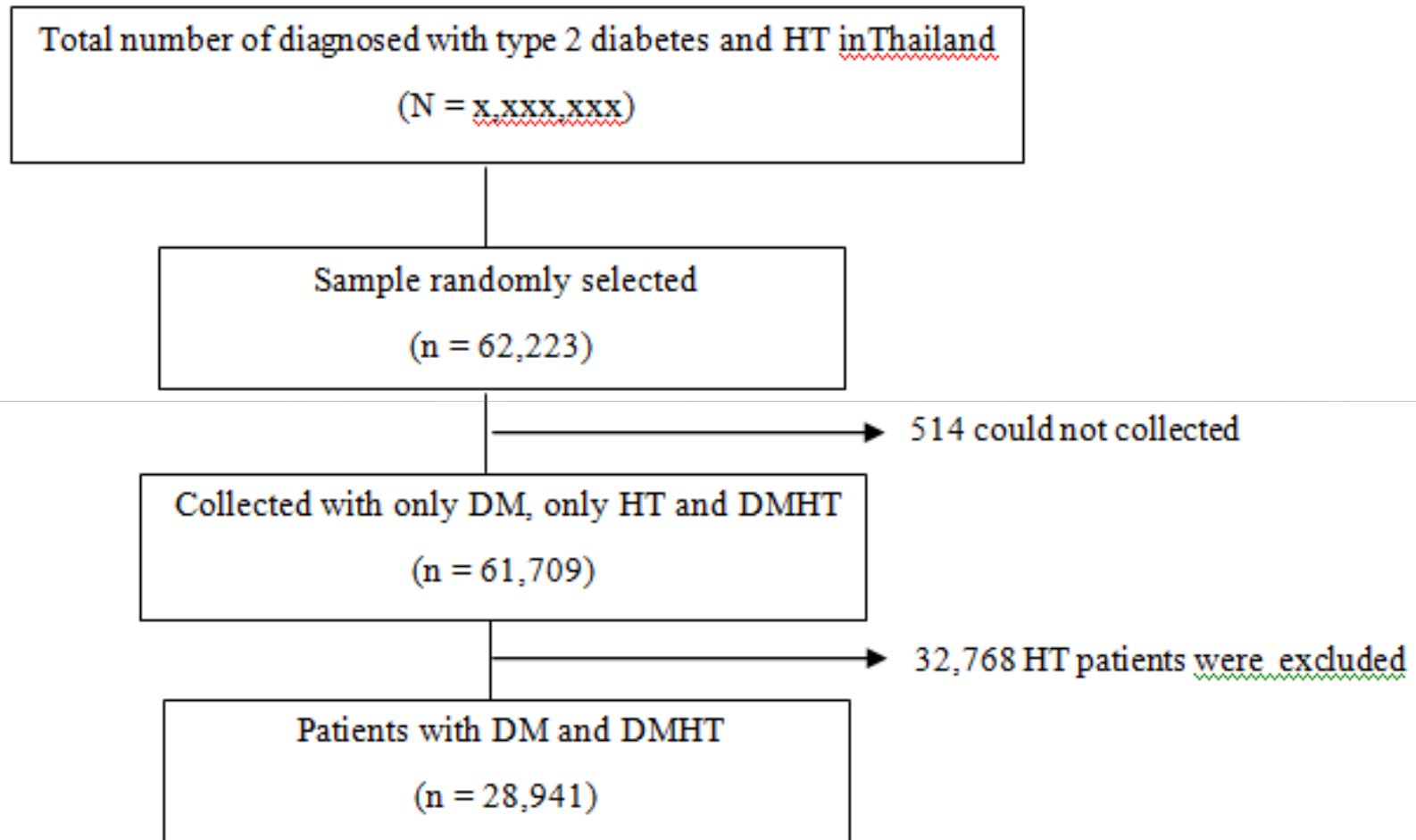
Objective

To examine the association of diabetic retinopathy and diabetic nephropathy among type 2 diabetic patients in Thailand to determine the prevalence of diabetic retinopathy and diabetic nephropathy.

Method

This paper is part of an assessment on quality of care among patients diagnosed with type 2 diabetes and hypertension (HT) visiting hospitals of ministry of public health and Bangkok metropolitan administration in Thailand in 2012. The sampling method was proportional to size, stratified cluster sampling. Collected data by case record form (CRF) follow by Toward Clinical Excellence' Network (TCEN). From 62,223 patients who randomly selected. Sample size were excluded by only HT patients and diagnosed DN. This study involved a total of 13,008 patients .

Method



The inclusion flow chart

Results

Table 1. Demographic characteristics presented as percentage unless specified otherwise

Characteristics	Total DM +DMHT		Screening for DN		Data not available in the medical record and Missing	
	Number	Percent	Number	Percent	Number	Percent
Sex						
Male	8,777	30.3	3,934	30.2	4,843	30.4
Female	20,164	69.7	9,074	69.8	11,090	69.6
Total	28,941	100.0	13,008	100.0	15,933	100.0
Age (years)						
Mean (SD)	60.0 (10.7)		60.0 (10.7)		59.8 (10.8)	
Median (Min: Max)	60 (20: 97)		60 (20: 97)		60 (20: 97)	
HbA1c (%)						
<7.00	7,377	33.3	3,654	32.7	3,723	33.9
≥7.00	14,760	66.7	7,507	67.3	7,253	66.1
Total	22,137	100.0	11,161	100.0	10,976	100.0
Serum creatinine (mg/dl)						
≤1.5	22,029	86.1	10,407	83.6	11,622	88.6
>1.5	3,544	13.9	2,041	16.4	1,503	11.4
Total	25,573	100.0	12,448	100.0	13,125	100.0
UAE						
Normal	6,119	45.5	3,811	48.2	2,308	41.7
Microalbuminuria	6,894	51.3	3,799	48.0	3,095	55.8
Macroalbuminuria	439	3.3	302	3.8	137	2.5
Total	13,452	100.0	7,912	100.0	5,540	100.0

Results

Table 1. Demographic characteristics presented as percentage unless specified otherwise

Characteristics	Total DM +DMHT		Screening for DN		Data not available in the medical record and Missing	
	Number	Percent	Number	Percent	Number	Percent
Triglyceride (mg/dL)						
<150	12,199	50.2	5,827	49.4	6,372	50.9
≥ 150	12,116	49.8	5,965	50.6	6,151	49.1
Total	24,315	100.0	11,792	100.0	12,523	100.0
Cholesterol (mg/dL)						
<200	15,200	65.4	7,507	66.2	7,693	64.7
≥ 200	8,036	34.6	3,840	33.8	4,196	35.3
Total	23,236	100.0	11,347	100.0	11,889	100.0
LDL (mg/dL)						
<100	10,455	43.5	5,265	44.2	5,190	42.7
≥ 100	13,599	56.5	6,641	55.8	6,958	57.3
Total	24,054	100.0	11,906	100.0	12,148	100.0
HDL (mg/dL)						
<40	7,299	33.2	3,778	34.4	3,521	32.0
≥ 40	14,672	66.8	7,203	65.6	7,469	68.0
Total	21,971	100.0	10,981	100.0	10,990	100.0
BP (mmHg)						
≤ 130/80	14,335	50.8	6,675	51.6	7,660	50.1
> 130/80	13,905	49.2	6,259	48.4	7,646	49.9
Total	28,240	100.0	12,934	100.0	15,306	100.0

Results

Table 1. Demographic characteristics presented as percentage unless specified otherwise (Con't)

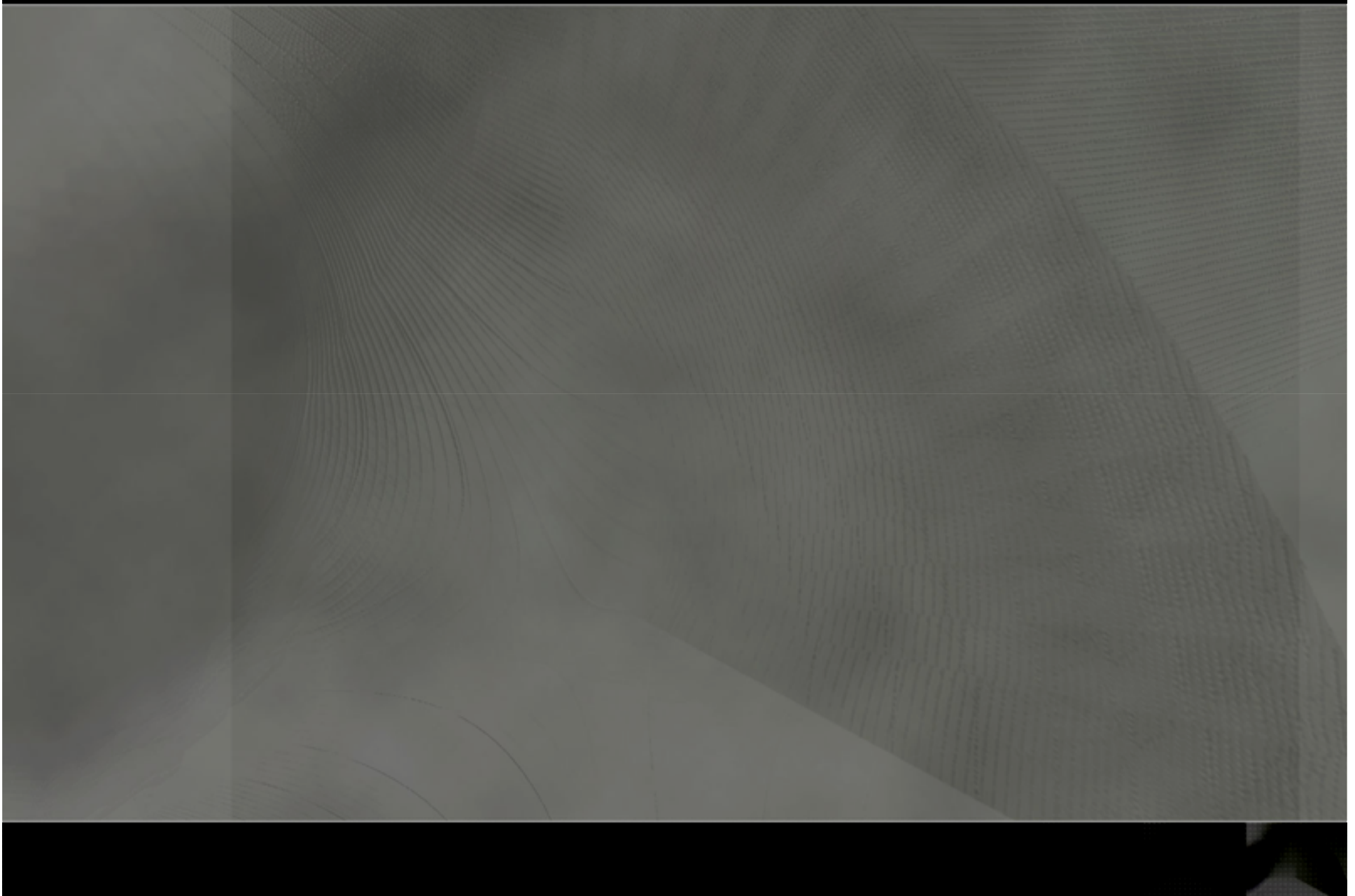
Characteristics	Total DM +DMHT		Screen for DN		Data not available in the medical record and Missing	
	Number	Percent	Number	Percent	Number	Percent
Duration of diabetes (Year)						
<5	7,007	28.3	4,225	37.7	5,500	41.9
6-10	11,592	46.8	4,593	41.0	5,266	40.1
11-15	4,357	17.6	1,728	15.4	1,738	13.2
>15	1,811	7.3	655	5.9	635	4.8
Total	24,767	100.0	11,201	100.0	13,139	100.0
Smoker						
No	17,663	90.5	7,796	89.5	9,867	91.3
Yes	1,855	9.5	912	10.5	943	8.7
Total	19,518	100.0	8,708	100.0	10,810	100.0
Diabetic Retinopathy						
No	12,456	84.0	6,959	84.1	5,497	83.8
Yes	2,378	16.0	1,313	15.9	1,065	16.2
Total	14,834	100.0	8,272	100.0	6,562	100.0

Results

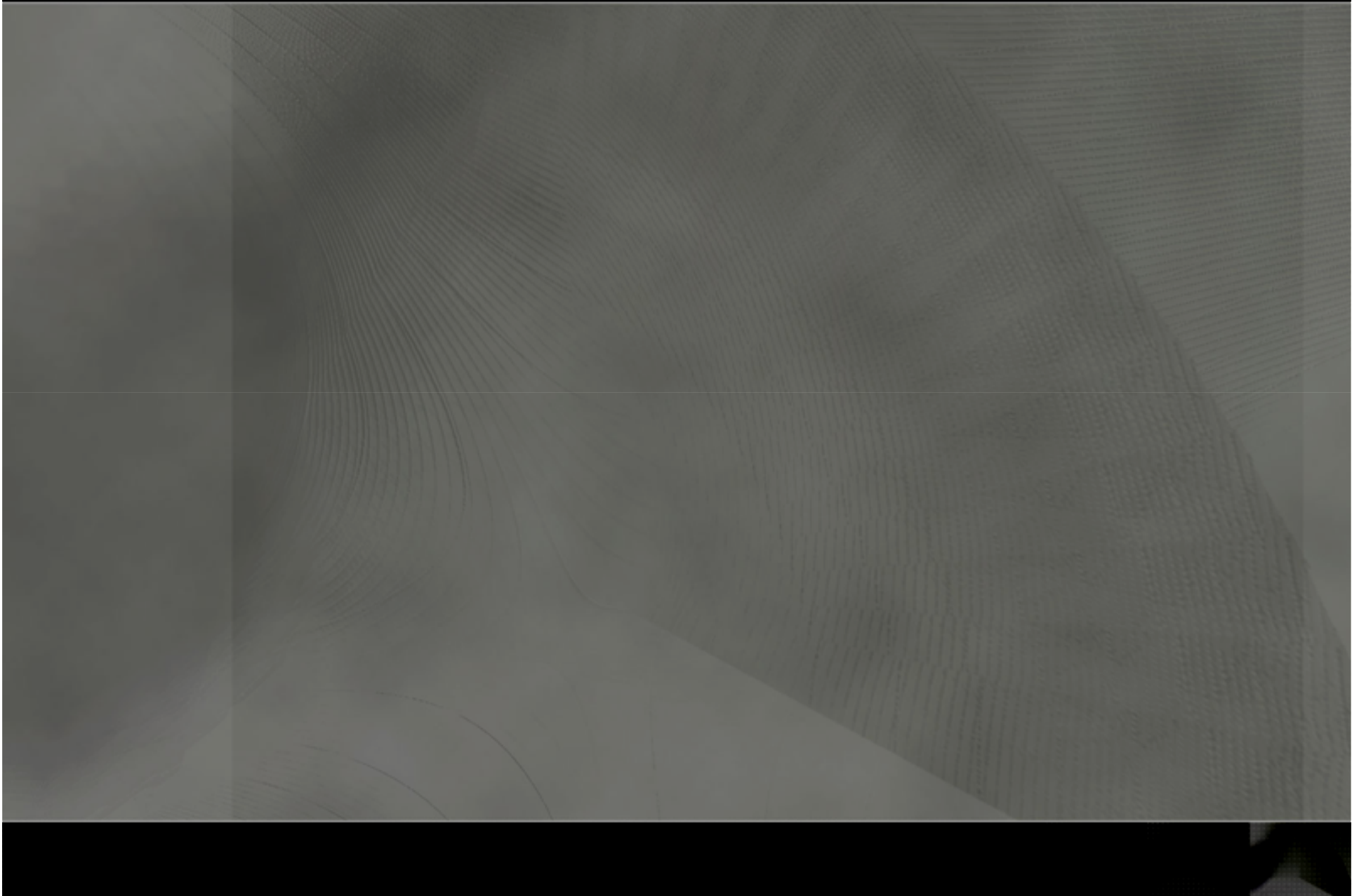


OR 1.55 (95%CI : 1.28-1.87)

Discussion



Conclusion





Diabetes

Thanks you

